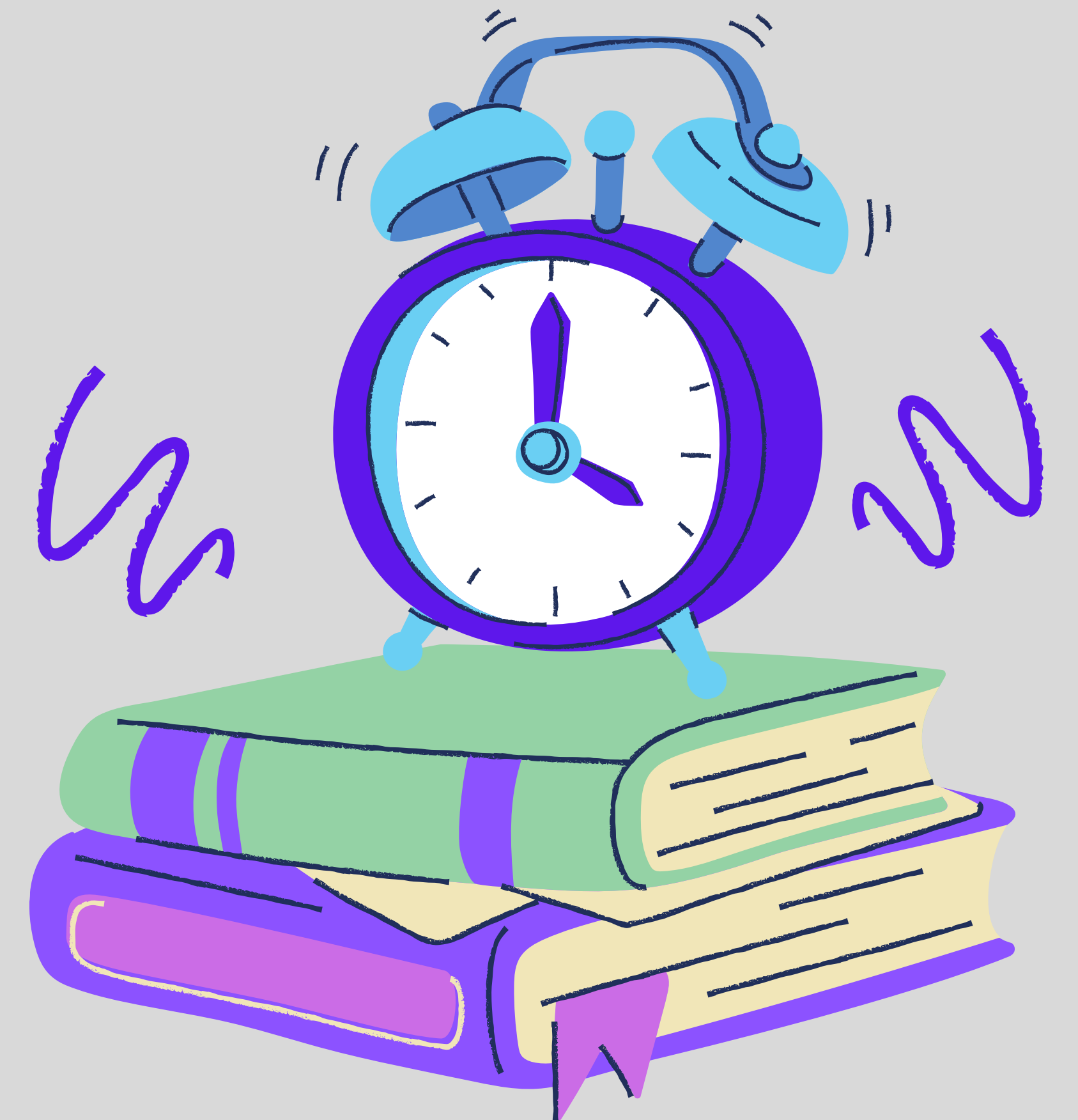


NATIONAL STUDY OF A SCALE FOR VISUAL IMPAIRMENT EDUCATIONAL PROFESSIONALS TO DETERMINE WORKLOAD

STUDY PARTICIPANTS NEEDED

Teachers of Students with Visual Impairments
Certified Orientation and Mobility Specialists



INTRODUCTION

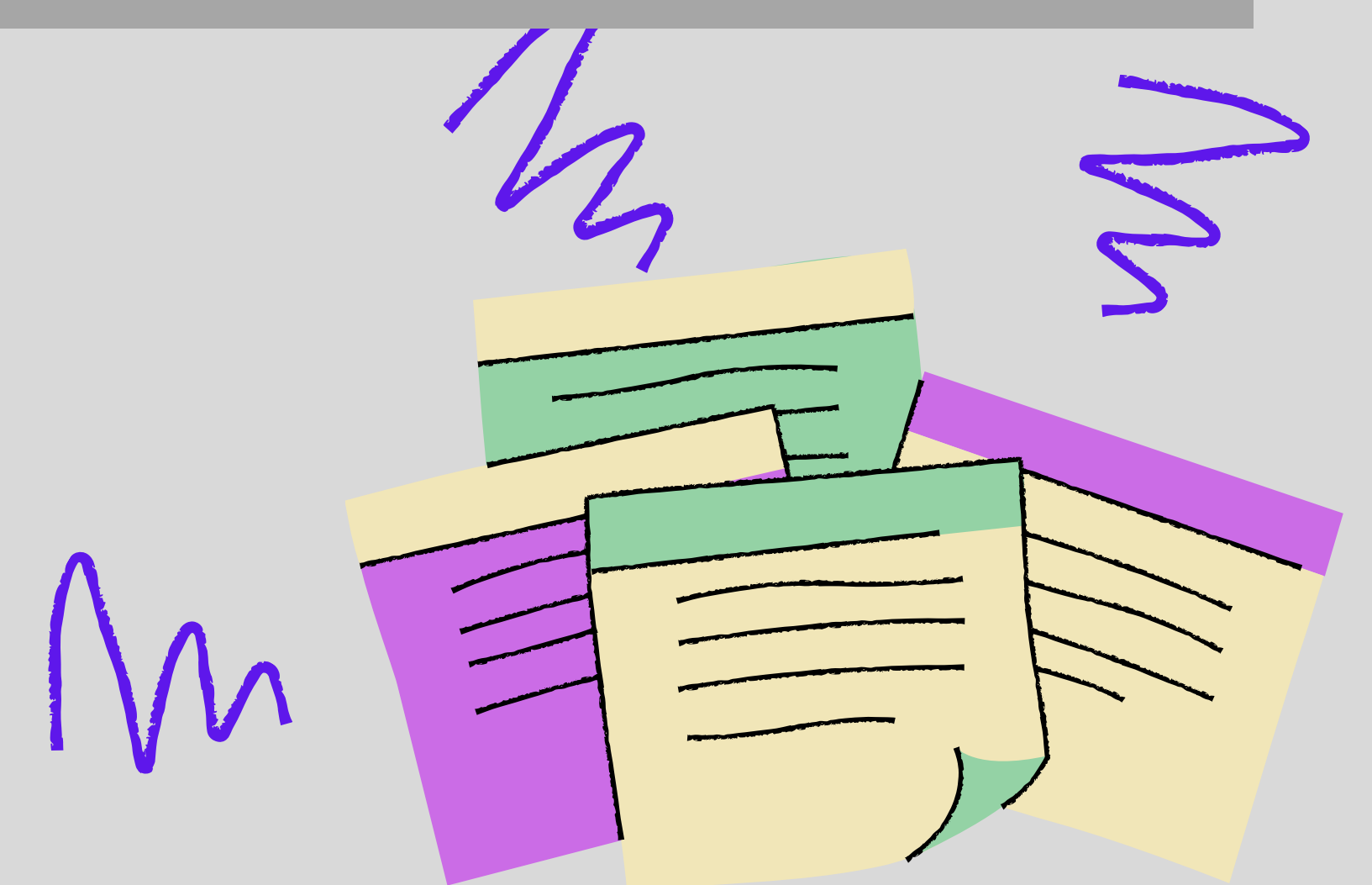
This study seeks to evaluate and validate a new scale, the *VISSPA*, designed by the Workload Analysis Subcommittee of the Texas Action Committee on Education of Students with Visual Impairments to support and guide educational vision professionals in analyzing their workload.

OBJECTIVE

The purpose is to determine if this scale will be an effective and valid tool when analyzing workload. The scale is called the *Visual Impairment Scale of Staffing Pattern Analysis (VISSPA)*.

ELIGIBLE PARTICIPANTS

We are looking for certified TSVIs and COMS who have completed a university training program and who work in an itinerant educational program to complete the *VISSPA* to analyze their workload.



CONTACT INFORMATION

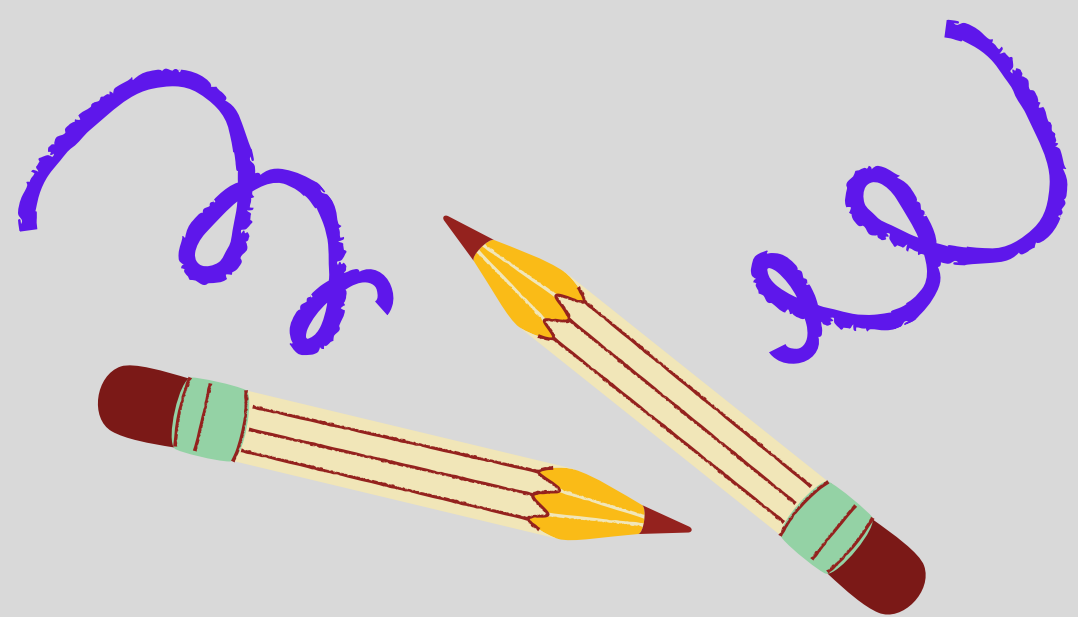
If you meet eligibility and are interested in participating in this study or have any questions, please contact Dr. Rona Pogrund.

DR. RONA POGRUND

TEXAS TECH UNIVERSITY

RONA.POGRUND@TTU.EDU

(806) 252-8026



DEADLINE: NOVEMBER 20, 2023



TEXAS TECH
UNIVERSITY.